

Briggs Shaw REAL ESTATE



529 Melbourne Road Blairgowrie VIC

4 2

This favourite holiday house is now available for a lucky family to rent on long term basis.

It has been always fully booked for guests stays during the last few summers. A quick look at the photos and the location will provide the obvious answer as to why it is so popular.

With national park and ocean beach being at the end of the street, this elegant property is also within a short distance, on the corridor to Sorrento town centre. It sets on a large block with an array of well-appointed interior set-ups and fabulous outdoor entertaining areas.

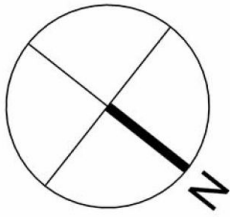
Inside the house, it boasts a grand master bedroom together with three additional large bedrooms, two separate, spacious living areas, central heating,

Price : \$1,300 pw

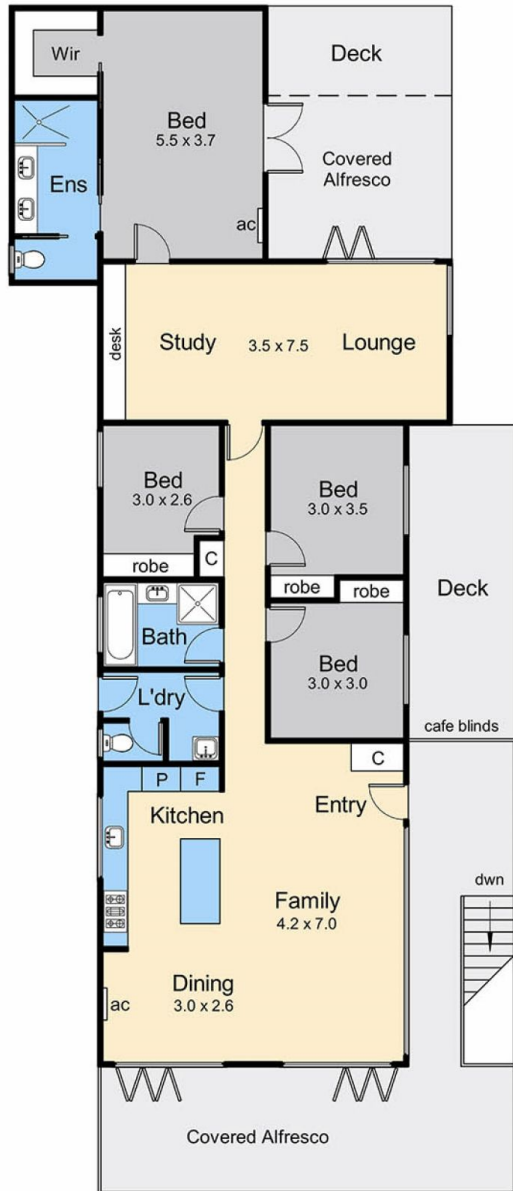
View : <https://www.briggsshaw.com.au/lease/vic/mornington-peninsula/blairgowrie/residential/house/7978978>



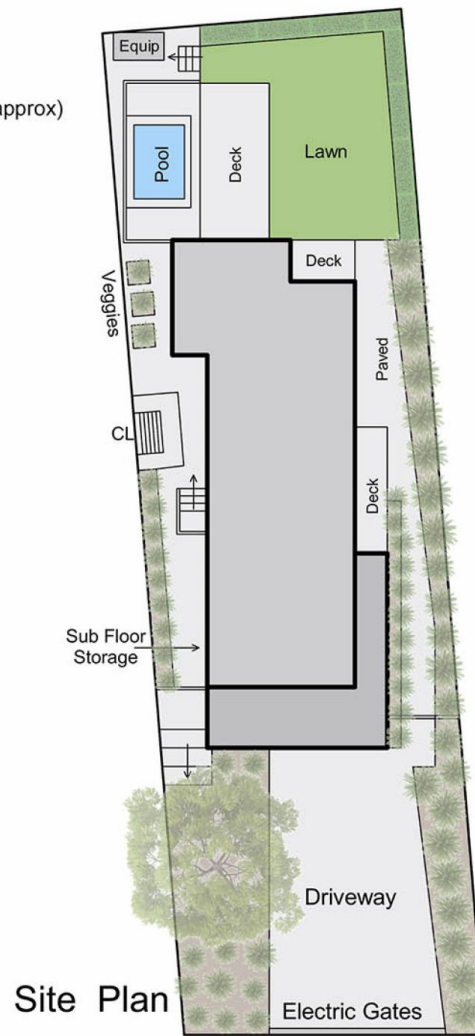
Jack Reilly
03 5988 8391



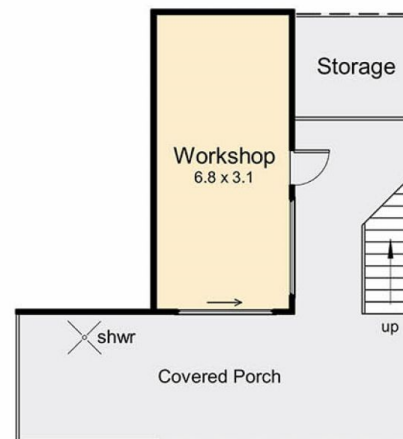
Total residence area = 30.5 squares (approx)
Total land area = 822 sqm (approx)



Upper Floor



Site Plan



Lower Floor

529 Melbourne Road, Blairgowrie

This floorplan is for illustration purposes only and no warranty is given to its accuracy. Purchasers are advised to carry out their own investigations. Produced by **realtymw** (03) 5970 2222