

## 2A Inglewood Crescent ROSEBUD VIC

4 🚗 3 🏠 4 🚗

From the moment you step inside you are instantly greeted by a spacious entry and then into the heart of the home. The modern kitchen with gas cooktop, electric oven and dishwasher and large dining area to entertain family and friends.

Step up into the loungeroom and warm up in front of the electric log fire or cool down with 2 split systems air-conditioners.

There are 3 large bedrooms with robes and split systems and 2 bathrooms.

Continuing outside, there is a large decking with a spa to celebrate those special occasions.

The fully self-contained unit is attached to the rear of the home and offers accommodation for teenagers or rental income. Off street parking for 4 cars, 3 garden sheds for

**Type** : House  
**Land Size** : 551 sqm  
**View** : <https://www.briggshaw.com.au/sale/vic/mornington-peninsula/rosebud/residential/house/7417388>

[For full version visit the website](https://www.briggshaw.com.au)

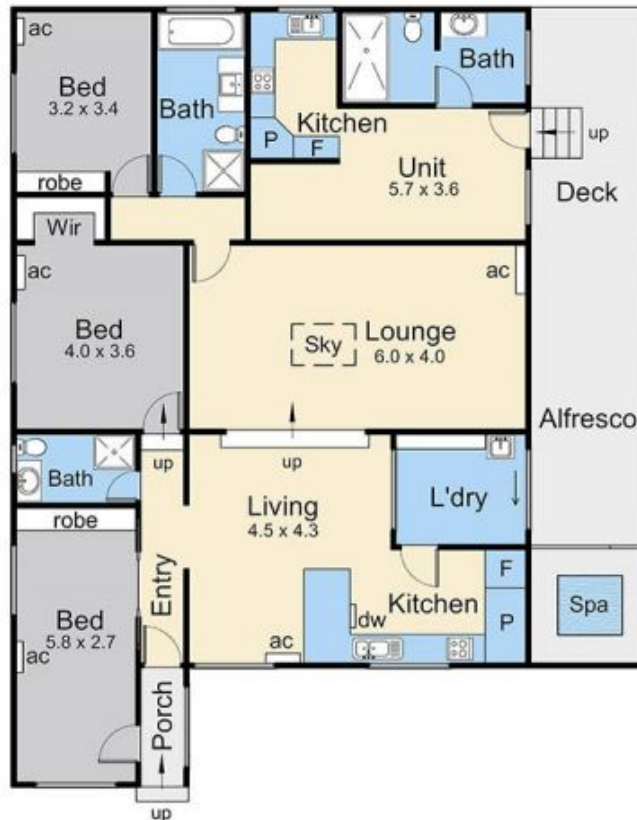


Area of Residence : 14.5 Squares  
 Area of Unit : 3.5 Squares  
 Total Area : 18 Squares

Site Plan



Floor Plan



## 2a Inglewood Crescent, Rosebud

This floorplan is for illustration purposes only and no warranty is given to its accuracy. Purchasers are advised to carry out their own investigations. Produced by **realitywriters** (03) 5970 2222