



2/10 Lowe Court BAYSWATER NORTH VIC

3 2 2

Here is your chance to purchase a brand new, luxury townhouse within minutes of all amenities the area has to offer.

Every element of these homes has been carefully thought out with a list of quality inclusions that make other developments jealous including timber flooring to living areas, stone bench tops in the kitchen, stainless steel appliances and split system air-conditioning throughout, just to mention a few.

Positioned just a few minutes drive from Eastland Shopping Centre, Eastlink and a long list of premium primary and secondary schools.

Key features:

Building Size : 19 sqm
Land Size : 215 sqm
View : <https://www.briggshaw.com.au/sale/vic/east/bayswater-north/residential/house/7417387>

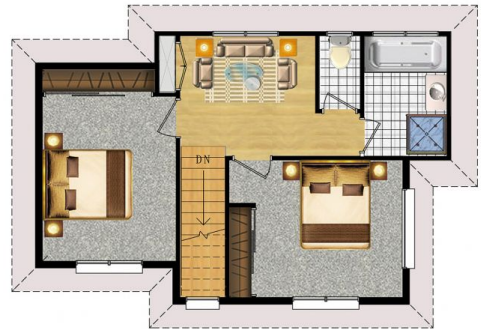


Justin Tang
03 5988 8391

UNIT2 10 LOWE COURT, BAYSWATER NORTH



GROUND FLOOR PLAN



FIRST FLOOR PLAN

AREA ANALYSIS

GROUND FLOOR	92.2m ²
FIRST FLOOR	50.8m ²
GARAGE	25.6m ²
PORCH	2.4m ²
PAVING	10m ²
CAR SPACE	2
P.O.S	70.1m ²