

## TH1/10 Bedford Court Heathmont VIC

3 🛏 2 🚿 2 🚗

Freshly completed, this 22sq. townhouse features quality fit-out showcasing herringbone oak timber flooring, large format glazing, gas fire place and TV recess in the living room on the ground floor. Gourmet kitchen boasts 900mm wide Bosch cook top, dishwasher, oven and a large rangehood.

The fabulous style of living is further complemented by the master bedroom also on the ground floor with walk in robe and en-suite and an alfresco area with gas and electricity provision, perfect for an outdoor kitchen.

Upstairs, in addition to two large bedrooms, separate toilet and a full bathroom, there is a generous second living area of 15 square meters, big enough to be converted to a

[For full version visit the website](https://www.briggsshaw.com.au)

**Type** : House  
**Price** : \$1,038,000  
**Building Size** : 200 sqm  
**Land Size** : 360 sqm  
**View** : <https://www.briggsshaw.com.au/sale/vic/east/heathmont/residential/house/7417382>

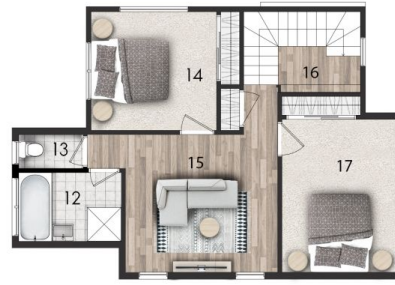


**Justin Tang**  
02 5088 8204



### UNIT 1

- |               |              |
|---------------|--------------|
| 1 PORCH       | 9 FRONTYARD  |
| 2 ENTRY       | 10 BACKYARD  |
| 3 KITCHEN     | 11 BEDROOM 1 |
| 4 DINING      | 12 ENSUITE   |
| 5 LIVING      | 13 TOILET    |
| 6 GARAGE      | 14 BEDROOM 2 |
| 7 LAUNDRY     | 15 SITTING   |
| 8 POWDER ROOM | 16 VOID      |
|               | 17 BEDROOM 3 |



### BUILDING

GROUND FLOOR AREA 97.2 SQM  
 UPPER FLOOR AREA 61.2 SQM  
 GARAGE AREA 28.5 SQM  
 PORCH 3.4 SQM

Disclaimer: These images are artists impression only. Every precaution has been taken to verify the accuracy of the above detail. Purchasers are advised to make their own enquiries.